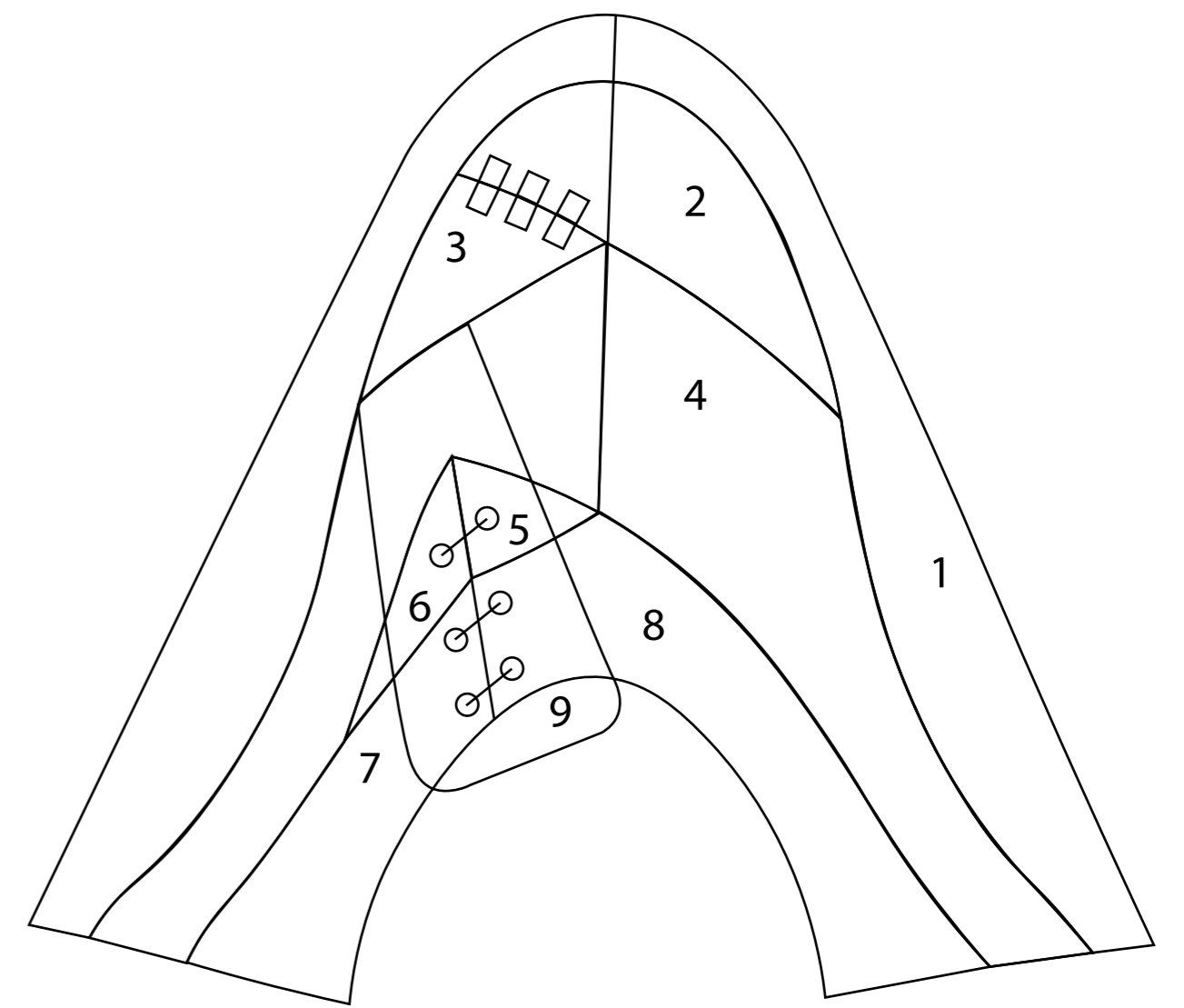
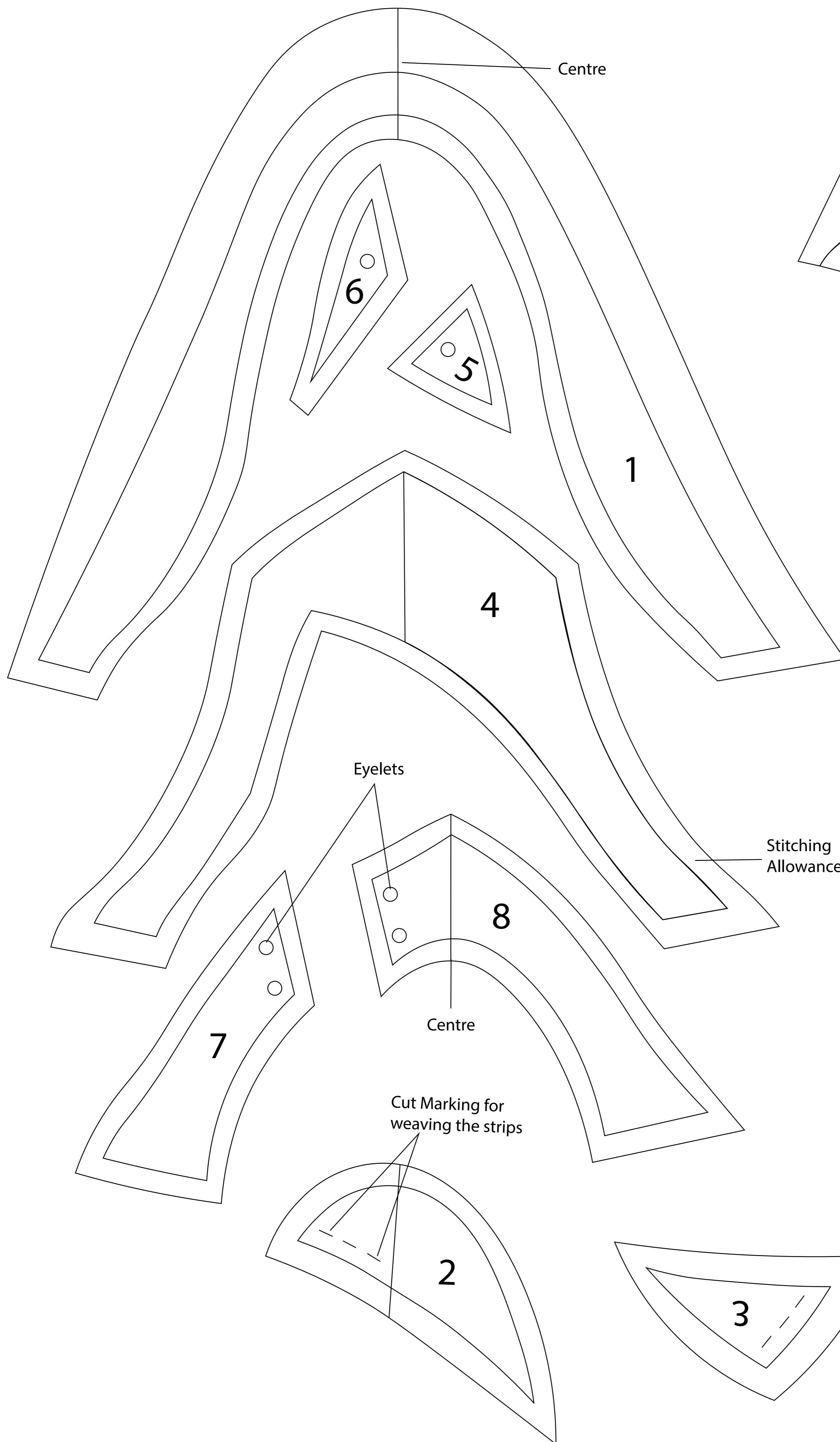
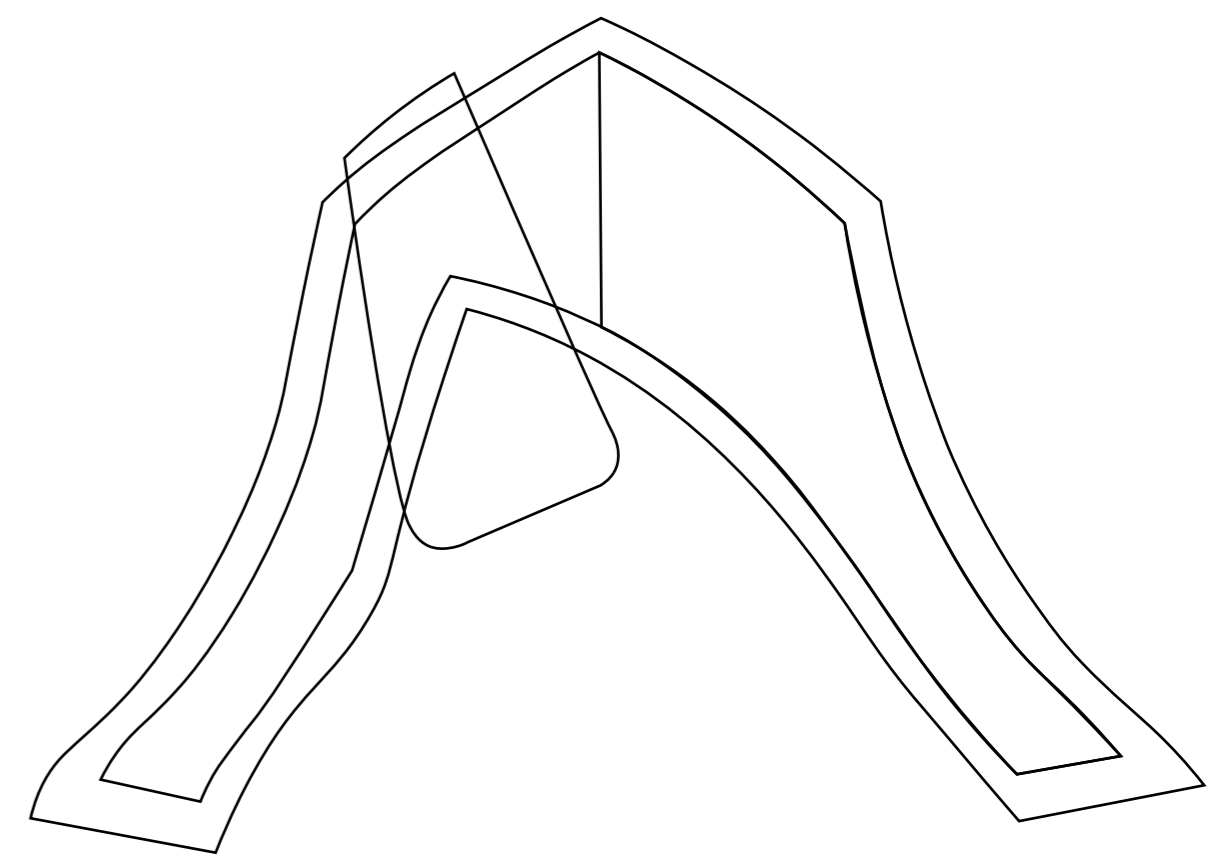


PATTERN - Patchwork Shoes (Upper)

SIZE- 37/38

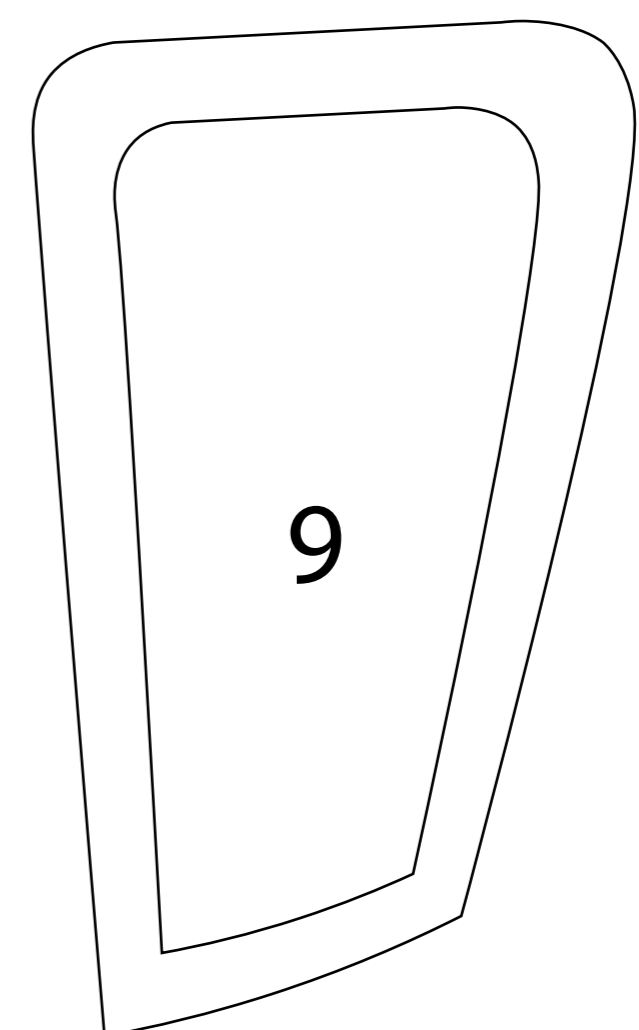


Reference image
how to attach the Upper

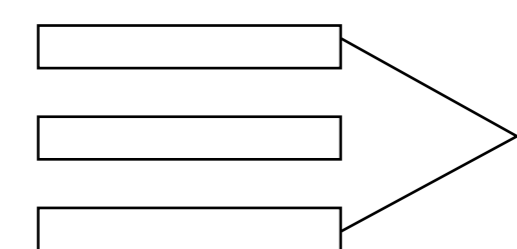


Reference image
how to attach the Tongue

Stitching Allowance



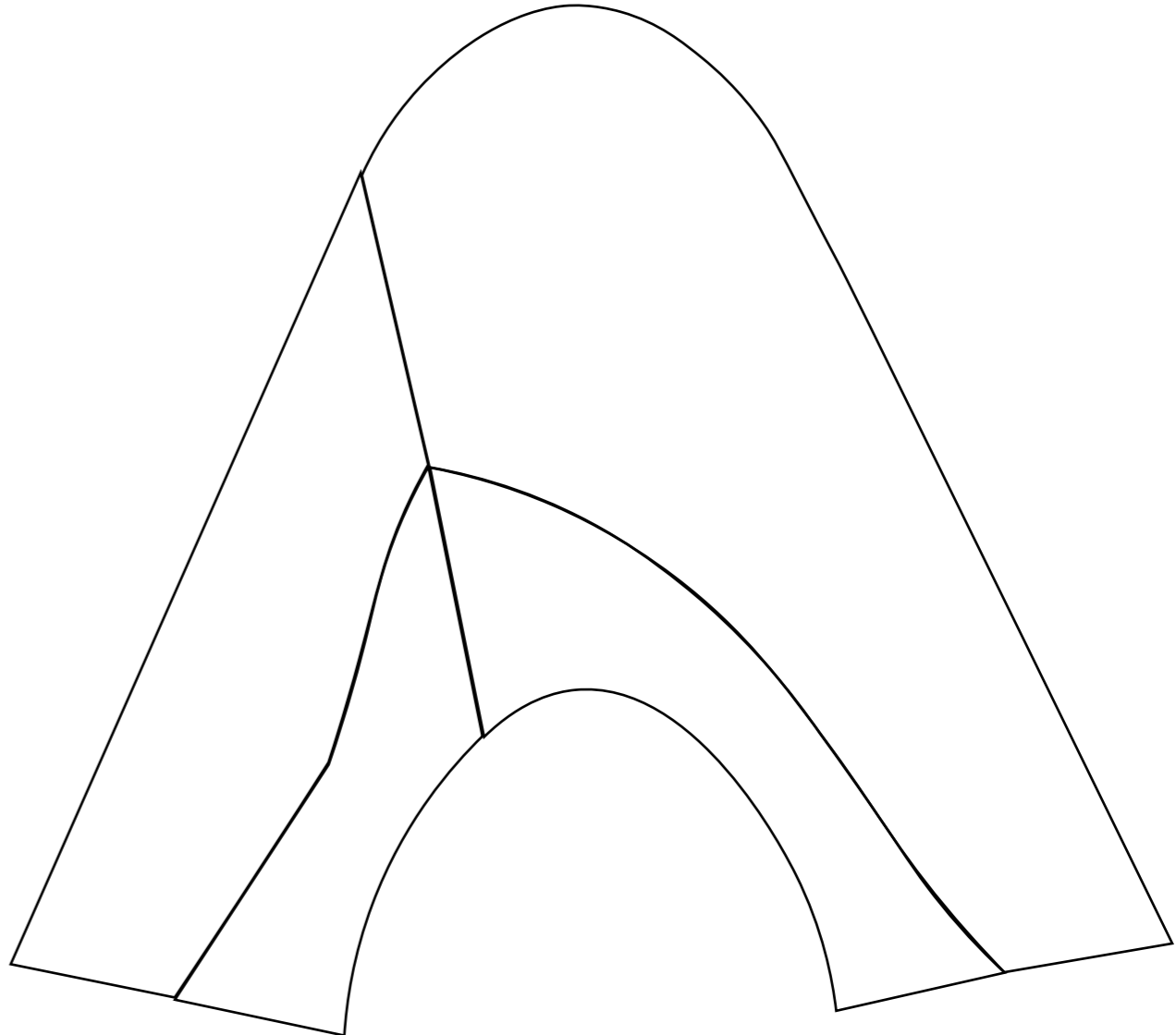
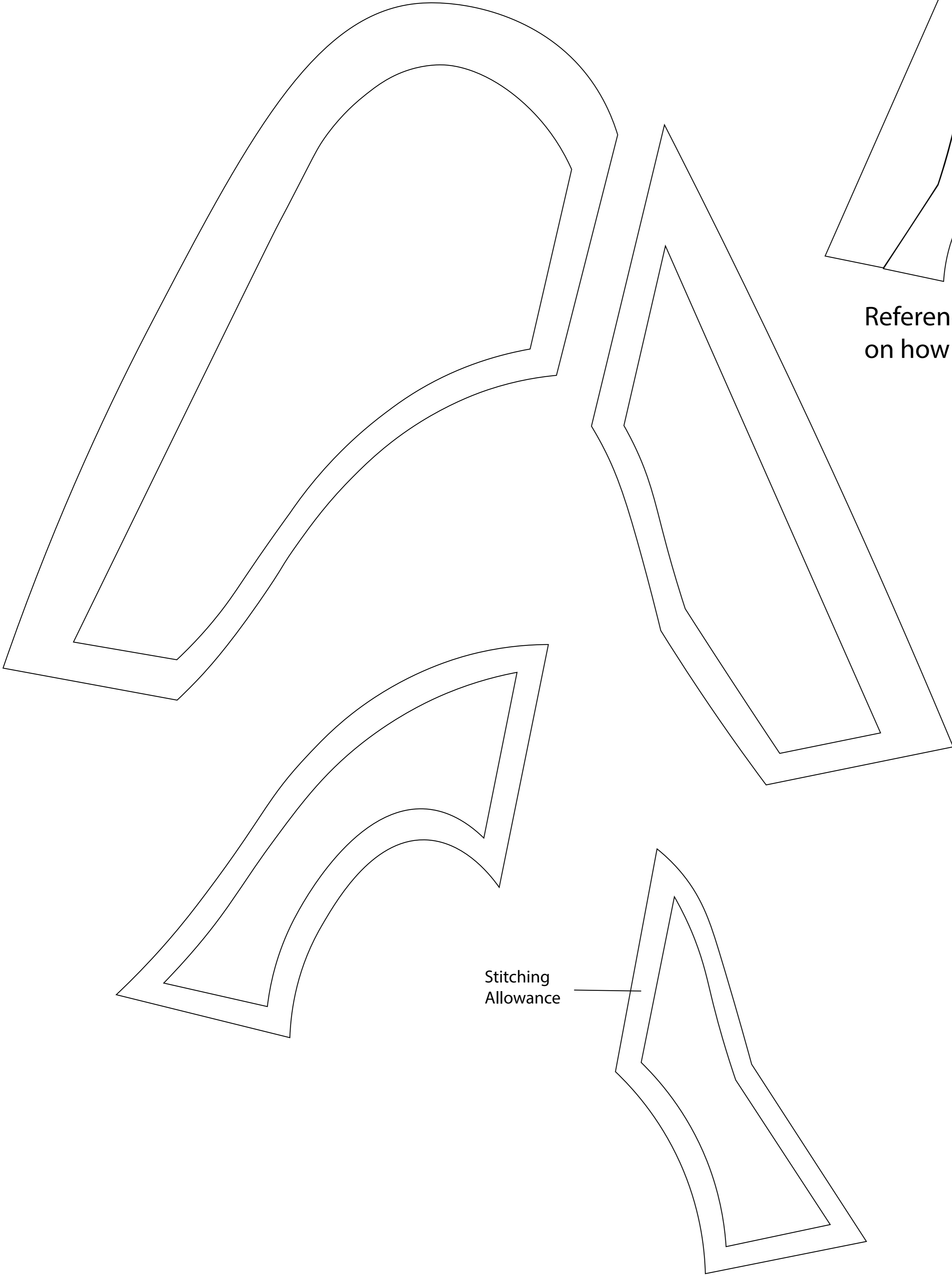
Tongue



Stripes
at the toe part

PATTERN - Patchwork Shoes (Lining)

SIZE- 37/38

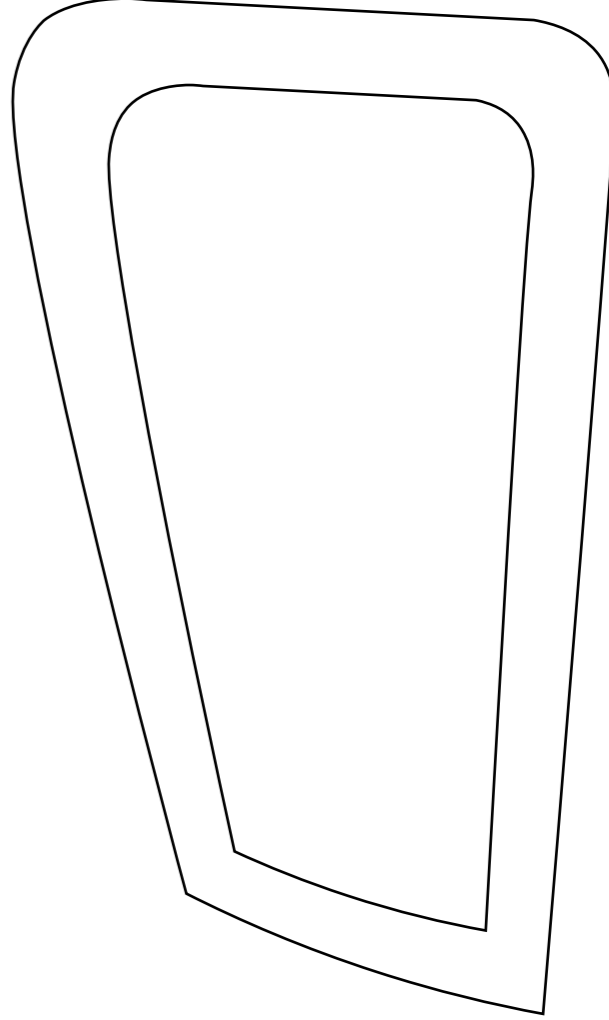


Reference image
on how to attach the Lining

Stitching
Allowance

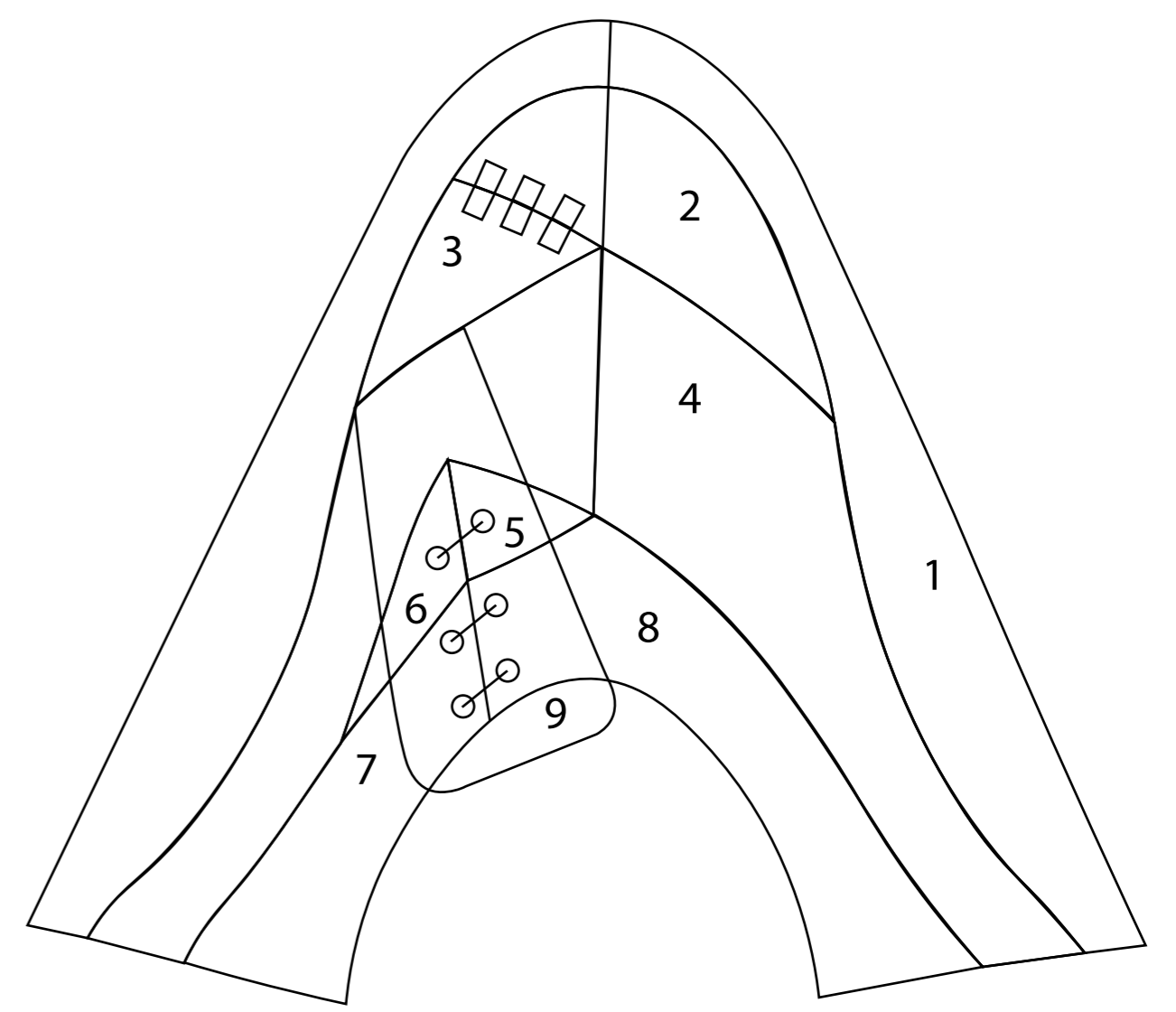
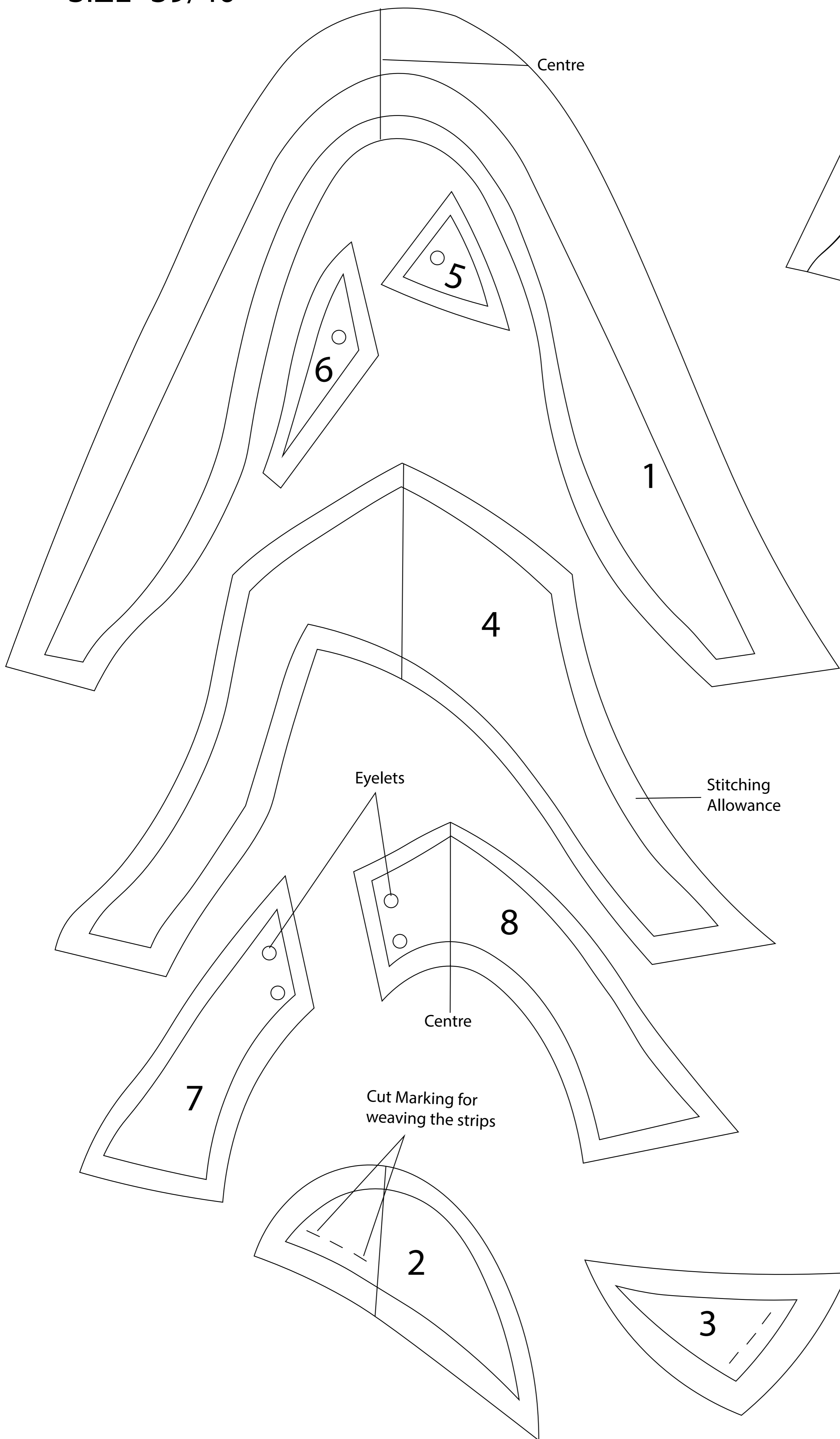


Tongue

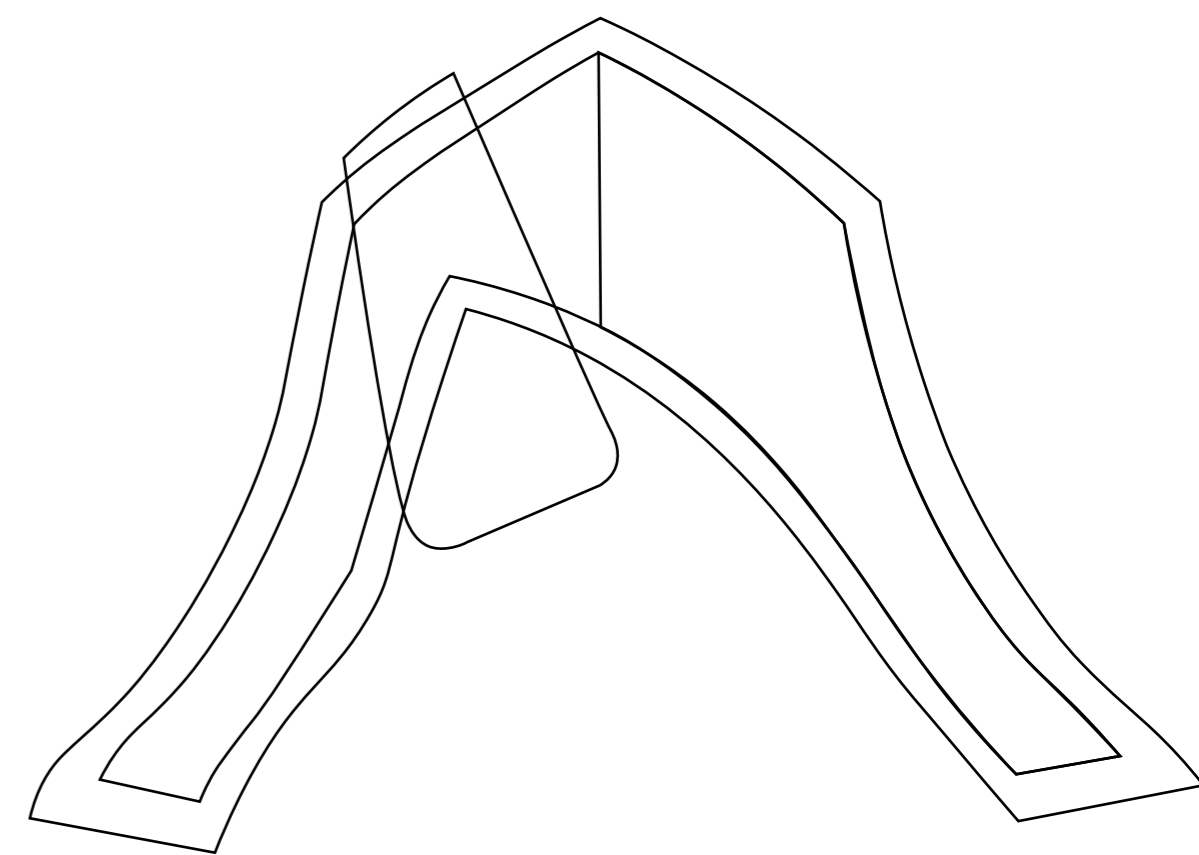


PATTERN - Patchwork Shoes (Upper)

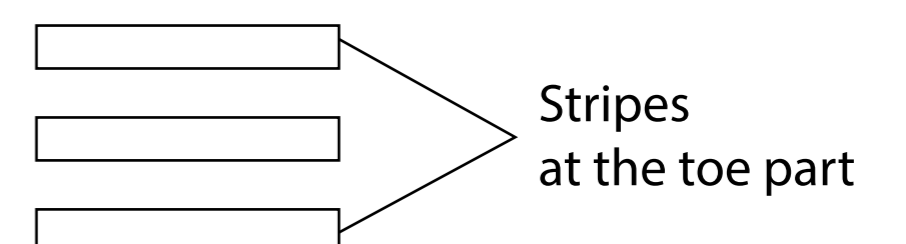
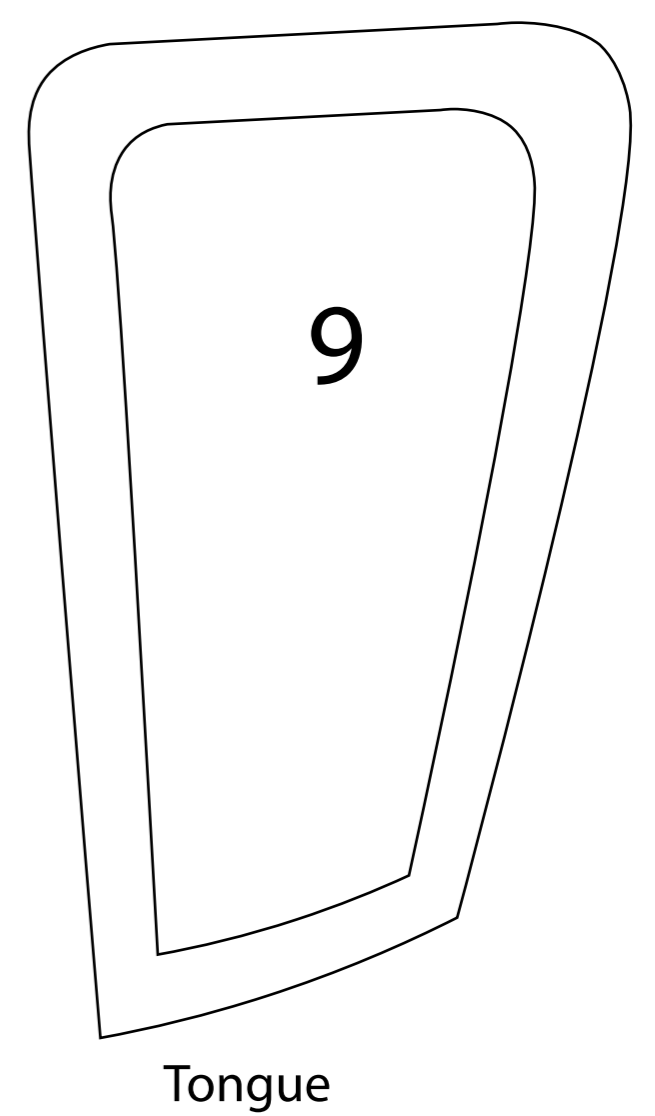
SIZE- 39/40



Reference image
how to attach the Upper

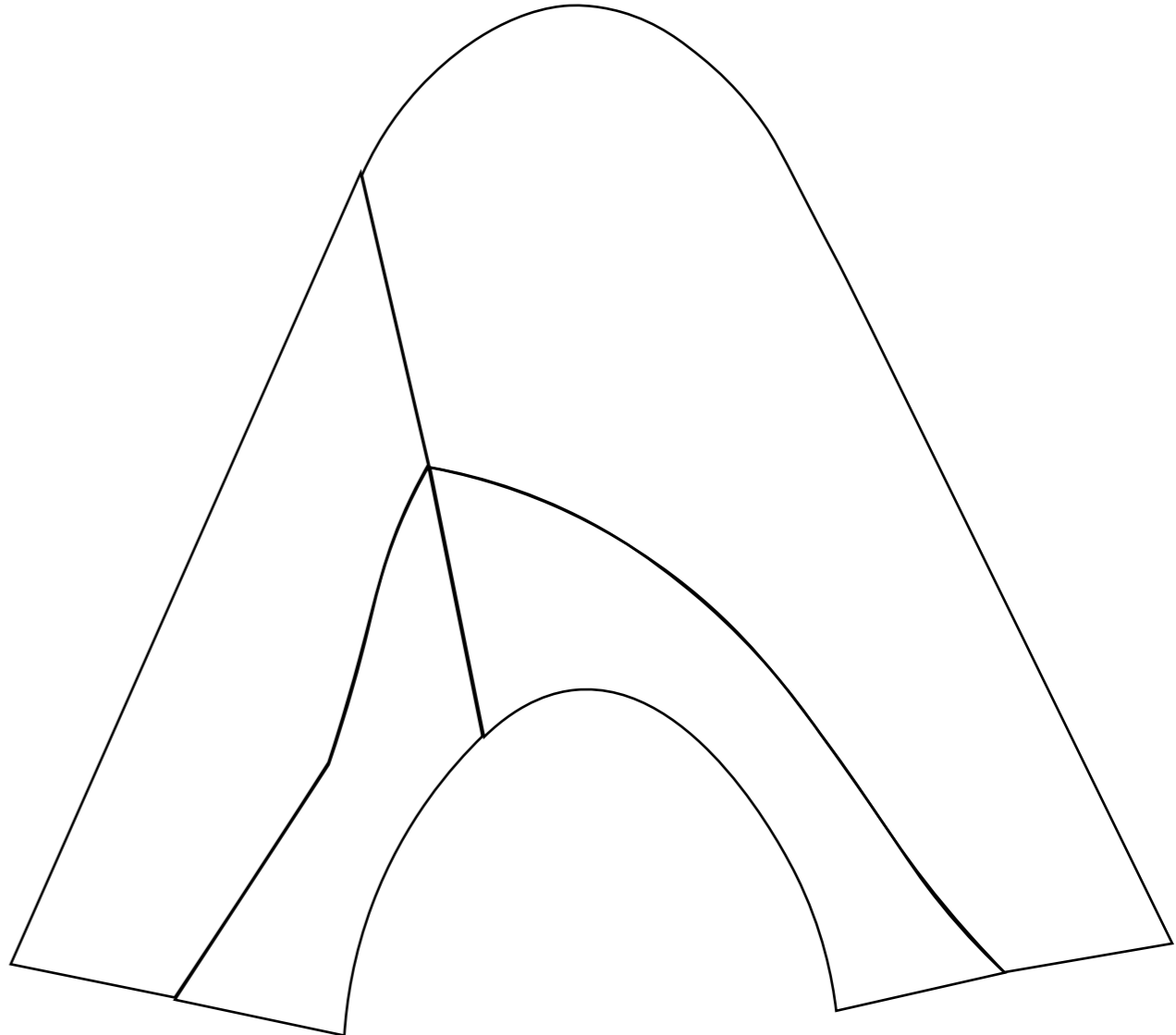
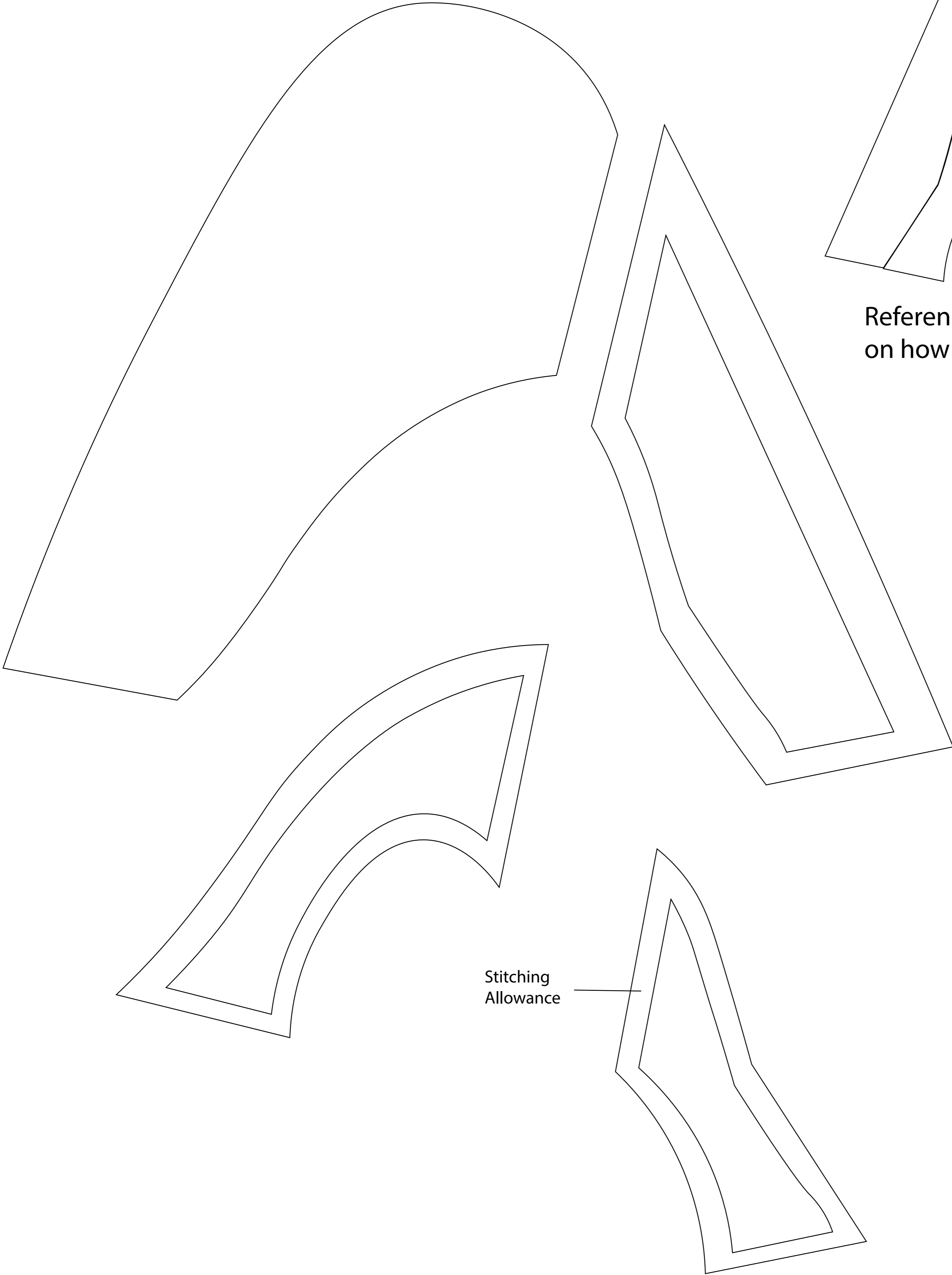


Reference image
how to attach the Tongue

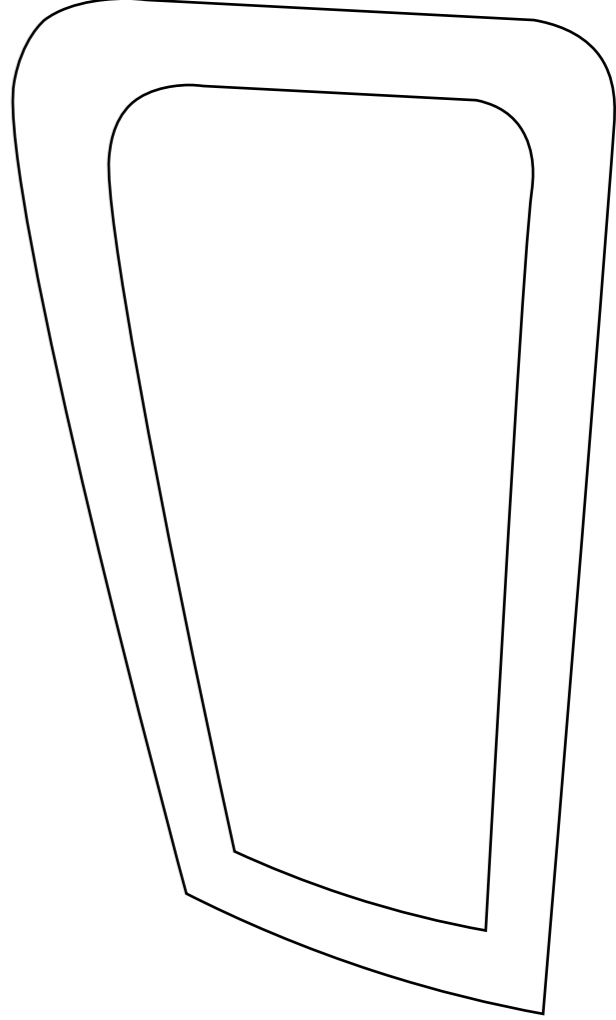


PATTERN - Patchwork Shoes (Lining)

SIZE- 39/40



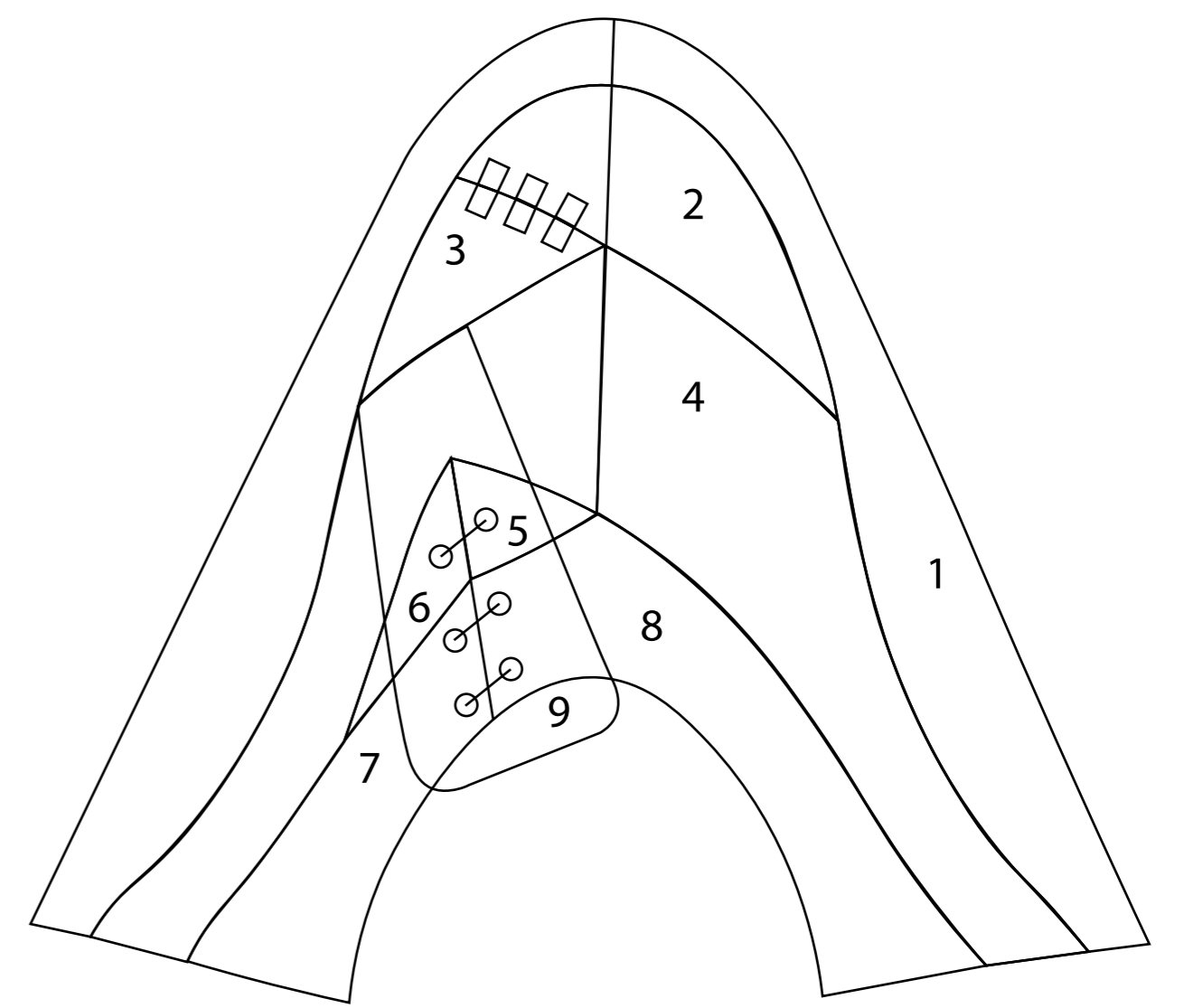
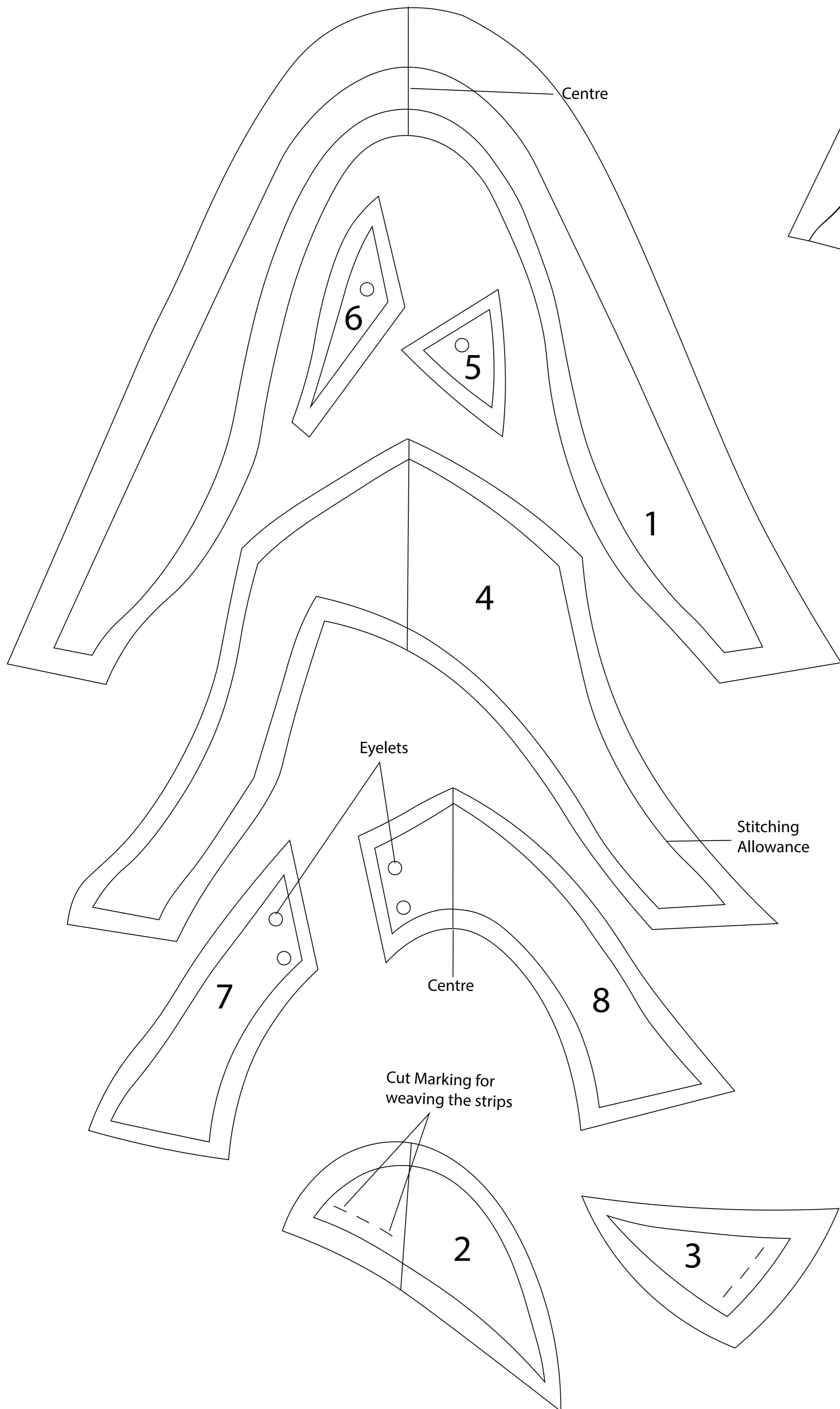
Reference image
on how to attach the Lining



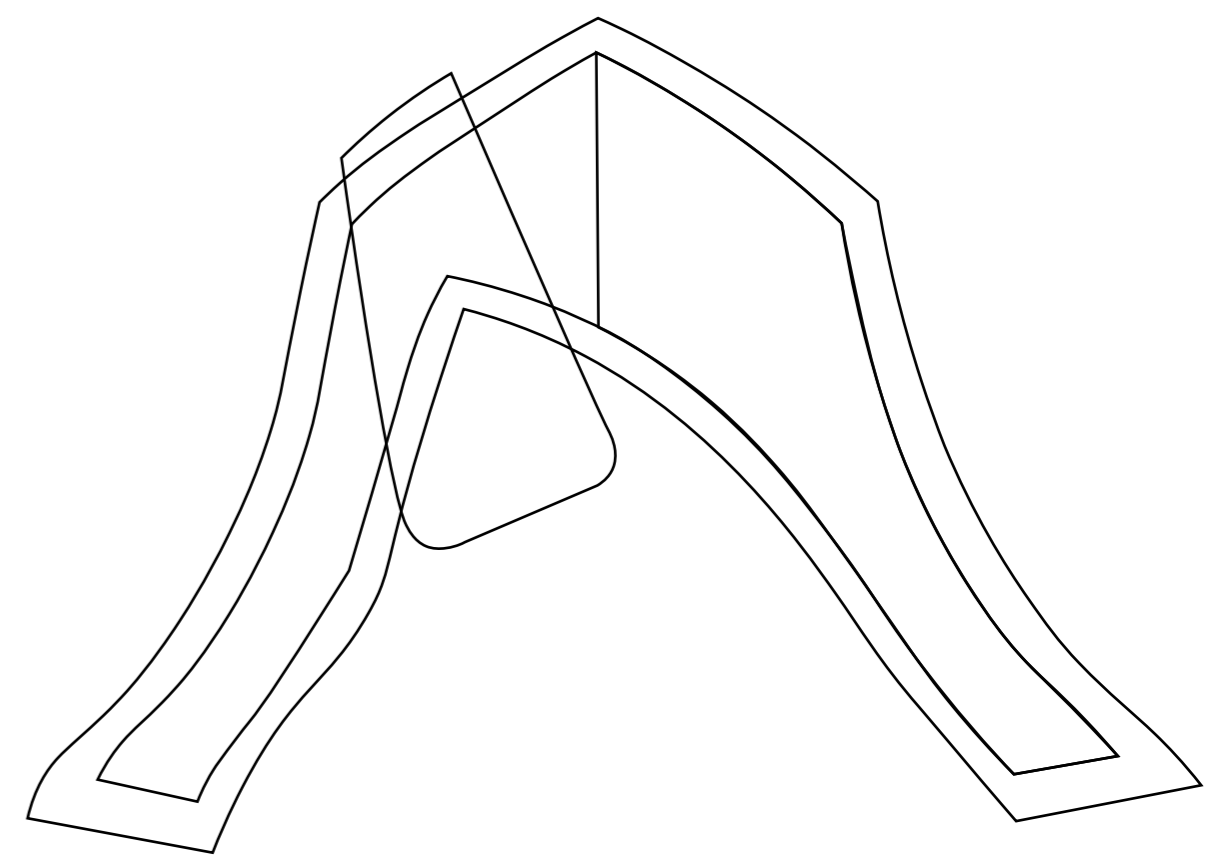
Tongue

PATTERN - Patchwork Shoes (Upper)

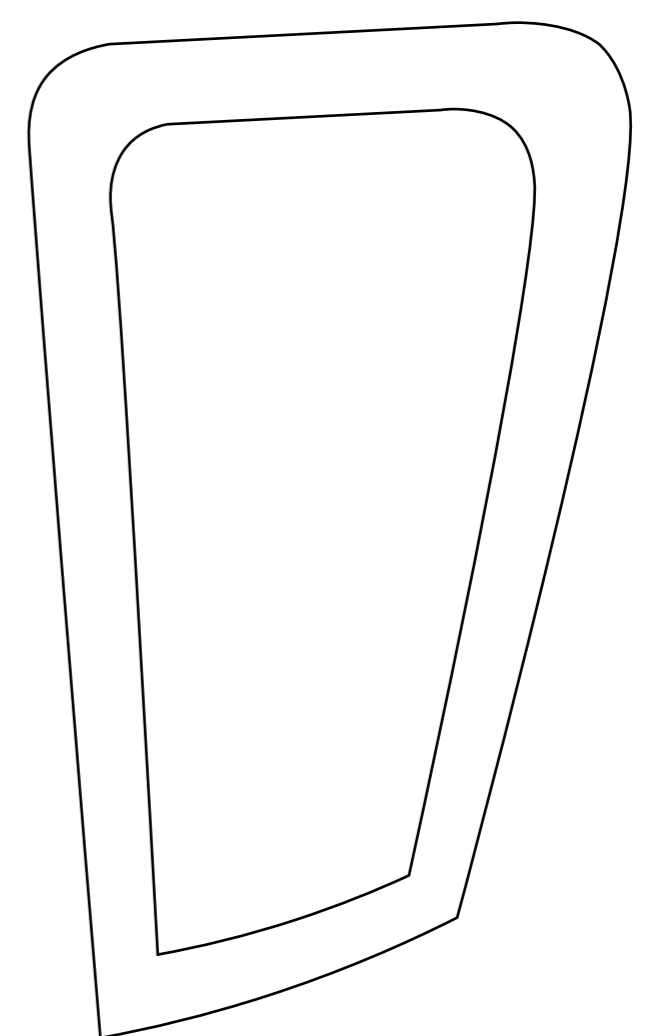
SIZE- 41/42



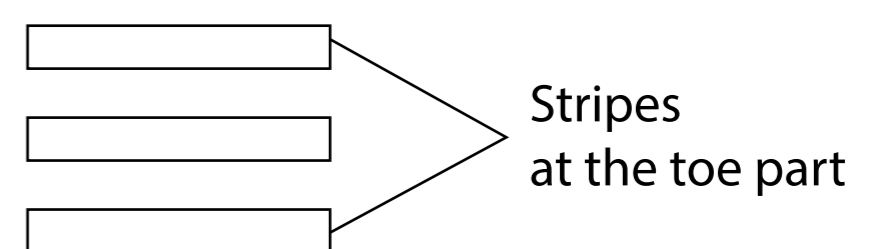
Reference image
how to attach the Upper



Reference image
how to attach the Tongue



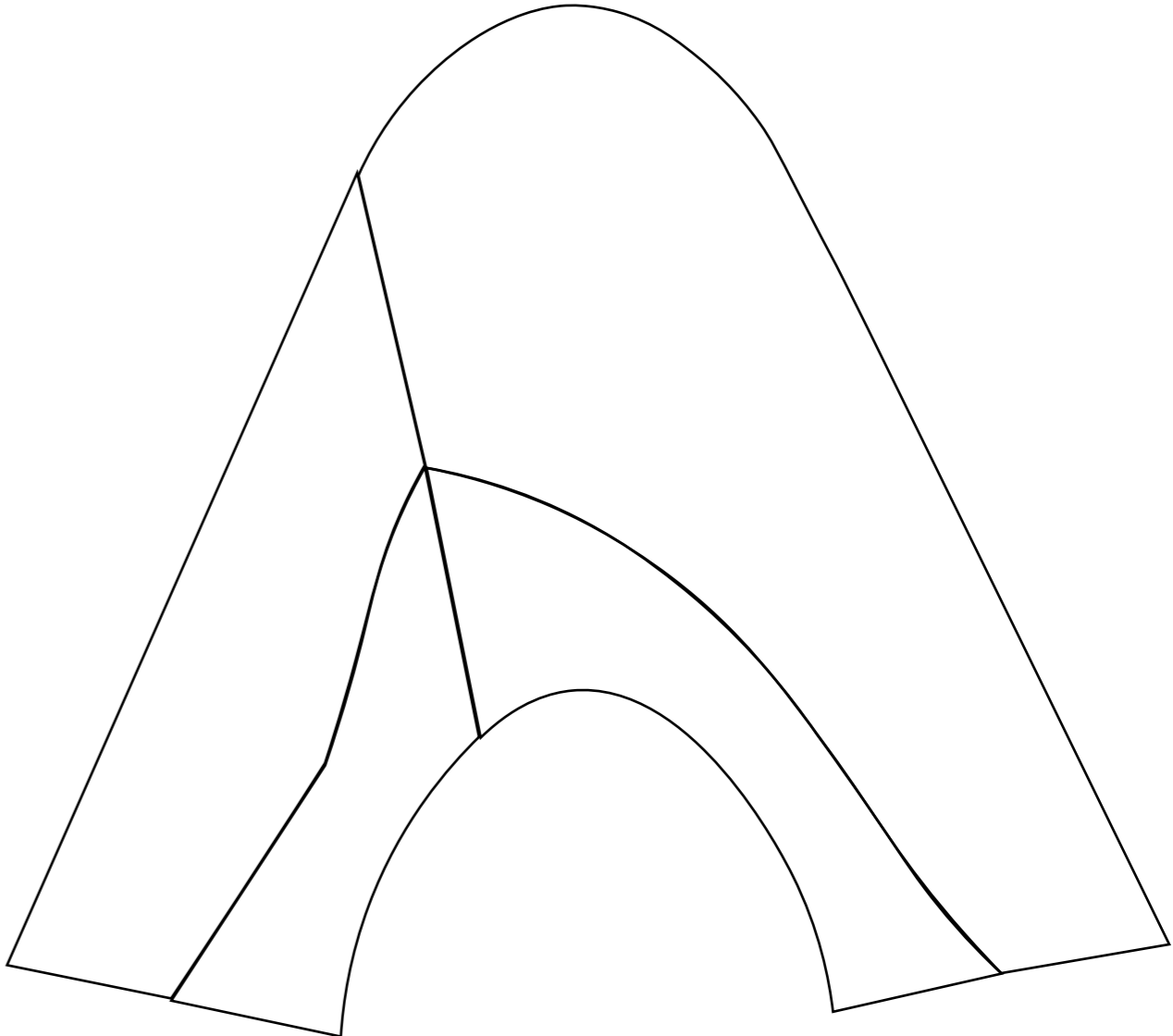
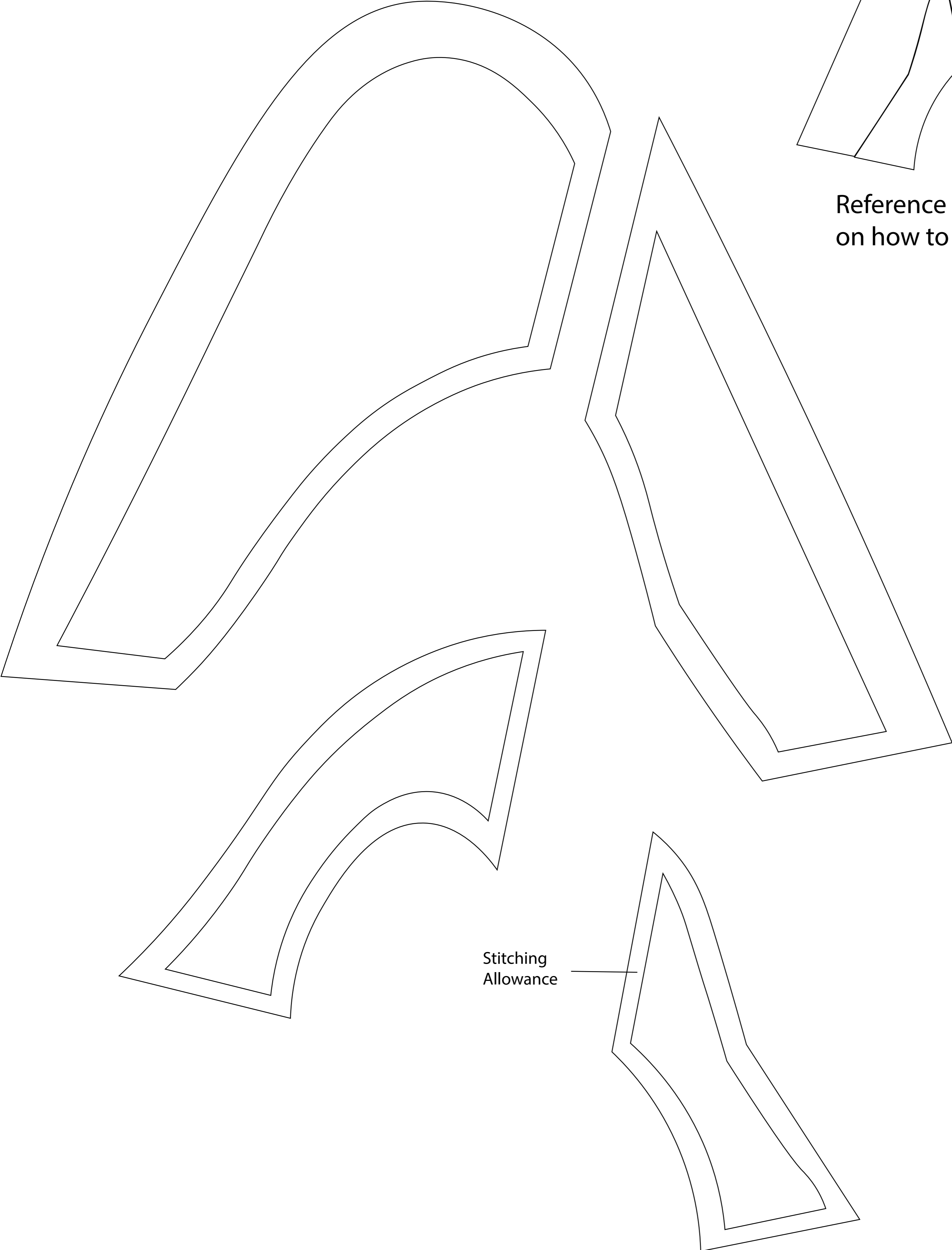
Tongue



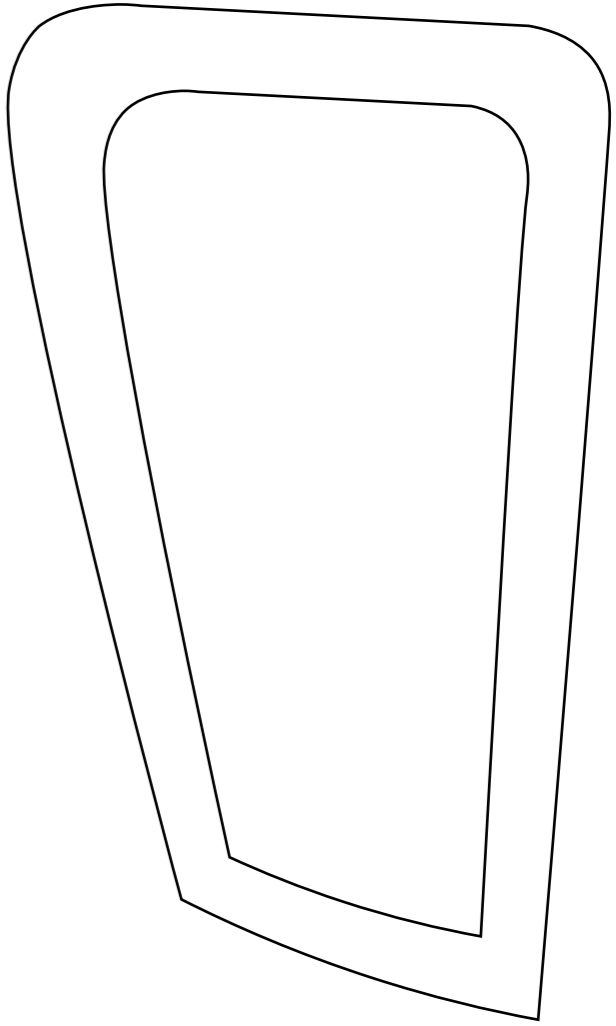
Stripes
at the toe part

PATTERN - Patchwork Shoes (Lining)

SIZE- 41/42



Reference image
on how to attach the Lining



Tongue