

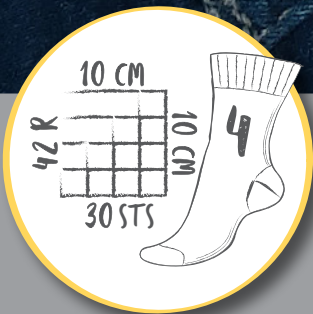
REGIA

PREMIUM

Extra
STURDY AND FLEXIBLE
SOLES FROM
BOTTIES®



A



Chessmaster Socks

R0449

regia.de | schachenmayr.com

Follow us     

MEZ GmbH, 2022. All rights reserved.



ADULT SIZE

36/37 38/39 40/41 42/43 44/45 46/47

Instructions are for smallest size, with changes for larger sizes noted in different colors. When only one figure is given, it applies to all sizes.

1 set of Double Pointed Needles (DPN) 2,0 - 3,0 mm (US size 0 and 2/3)

THE BASICS

Ribbed pattern: k2, p2 in alternation

Stockinette stitch:

In rows: RS: knit all st; WS: purl all st.

In rounds: knit all stitches.

BASIC PATTERN

Chessboard pattern:

Rd 1: knit.

Rd 2 to 12/12/13/13/14/15: k8/8/8/8/9/9, p7/7/8/8/8/9.

Rd 13/13/14/14/15/16: knit.

Rd 14/14/15/15/16/17 to 24/24/26/26/28/30: k8/8/8/8/9/9, p7/7/8/8/8/9.

See charts.

GAUGE

Using needle size 2,0 - 3,0 mm:

Stockinette stitch: 30 st and 42 Rd = 10 x 10 cm,

Basic pattern: 32 st and 42 Rd = 10 x 10 cm.

If your gauge differs from the given gauge, use a hook of a larger or smaller size accordingly.

INSTRUCTIONS

With DPN, cast on 60/60/64/64/68/72 st evenly spaced (= 15/15/16/16/17/18 st on each Needle) and work in rounds.

Work 4/4/5/5/5/5 cm for the cuff in ribbed pattern, then continue in basic pattern. After working the pattern repeat two times, work the heel with heel flap (mister masche prefers this method) or work a boomerang heel according to 'Technique of the sock knitting R0333'.

Work the foot over the stitches on Needles 2 and 3 in basic pattern, the stitches on Needle 1 and 4 in stockinette stitch. When the foot part in basic pattern measures 8,5/20/21/22/22,5/24 cm, continue with the barn toe in stockinette stitch as follows:

Work across Needles 1 and 3 to the last 3 st, then k2tog and knit the last st. Work Needles 2 and 4 as follows: knit the first st, skp (= slip 1 st knitwise, k1, pass the slipped st over), work to the last 3 st, then k2tog and knit the last st. Work these decreases according to the table in 'Technique of the sock knitting R0333', until 8 sts remain. Thread the working yarn through the remaining st and pull together snugly.

Or place these 8 st on 2 needles and graft the side edges together.

Foot length: 23,5/25/26,5/27,5/28,5/30 cm

Work the second sock the same way.

Chart size 36/37 and 38/39

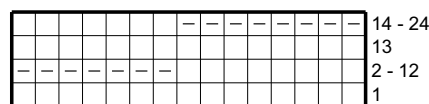


Chart size 40/41 and 42/43

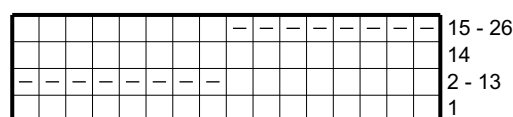


Chart size 44/45

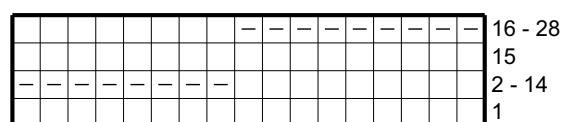
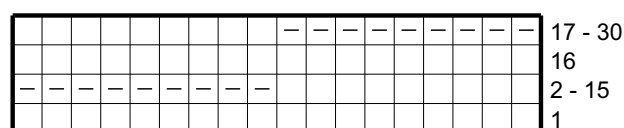


Chart size 46/47



KEY

- = k1
- = p1

ABBREVIATIONS

- k = knit
- p = purl
- R = row(s)
- Rd = round(s)
- RS = right side
- st = stitch(es)
- WS = wrong side

Tip

You will find the course „Technique of sock knitting“ at www.schachenmayr.com under the design No R0333. Sizing charts can be found at Tips & Tricks at www.schachenmayr.com.



Did you know that our designs are on Ravelry too? Search for the model number, create your project and link it to our pattern for all Ravelers to see and to admire.

#madewithregia

R0449

V.1/ZM/MD

Chessmaster Socks

Design: mister masche

First publication: october 2022



BOTTIES®

STURDY AND FLEXIBLE SOLES FROM BOTTIES

Give your self-knitted socks that little bit extra with Botties soles! The durable, non-slip soles not only offer protection against rapid wear, but also make your socks suitable for everyday use - perfect for quick errands at the door. The soles are very easy to care for, meaning they can be washed as normal.

Choose between the "Original Botties" soles for extra comfort thanks to thick insoles or the "Botties Basic Edition" to enjoy the natural barefoot feeling. Below you will find simple instructions for sewing the socks onto your Botties soles.

INSTRUCTIONS FOR SEWING ON THE SOLES:

1. Insert either the thick insole (Original Botties) or a cardboard template (Basic Edition) into the sock to keep it in shape.
2. Optional: For extra comfort, you can also sew the insole directly under the sock. Insoles made of wool felt can then also be inserted into the socks.
3. Depending on the sole type, we recommend different stitches: The back stitch is ideal for the Basic Edition. With the Original Botties soles it is best to use the buttonhole or festoon stitch. You can sew and fix the heel cap on the sock using the additional holes.
4. As a sewing thread, we recommend our special thread for "Round Zero" from Botties.

"Original Botties" Soles:



Botties Soles "Basic Edition":

